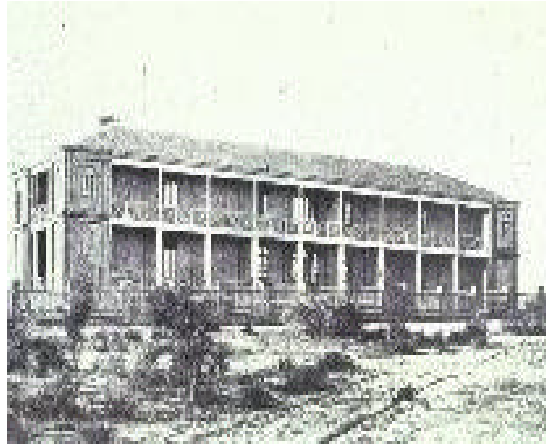




Light Eco Energy Conservation Case Study



The Colonial Hospital 1855



RPH today

ROYAL PERTH HOSPITAL

Western Australia's premier teaching hospital

Site Description: Royal Perth Hospital traces its history back to the first colonial hospital which was established in a tent on Garden Island just off the WA coast. Today the 855-bed Hospital is located at two sites, Wellington Street in the heart of the City of Perth, and at Shenton Park. RPH is a fully accredited teaching hospital. RPH motto is 'Servio' which bears testimony to a long tradition of excellence in service to patients. Annual electrical energy consumption on lighting in the sites is in the order of 1250 MWhr with a cost of \$100,000 out of a total annual electricity cost of around \$400,000. The Light Eco extends tube life by 30%, runs them 2°C cooler creating air conditioning savings. Energy savings are regularly monitored and exceed the 25% aim.

Project Description: Engineering Staff recognising that lighting energy represents a significant portion of the operating costs highlighted the hospital's fluorescent lighting as a major area for conservation with the aim to provide at least a 25% saving. RPH, in choosing Light Eco, recognised the vital importance of having a fail-safe product in the hospital. Light Eco is the only product of its type which constantly monitors current and voltage and immediately switches to full power if a critical drop or surge in power occurs, preventing brown out or worse blackout or critical lighting failure. A trial of the Units was made in March and the reduction of energy consumption monitored. A commitment to complete the installation on all floors was made in May and completed in June 2001. In 2002 a further 100 units were installed.

Summary of Results:

Annual savings	\$33,500
Cost of investment	\$59,000
Internal Rate of Return	60% (simple pay-back = 21months)
Energy savings per year	419 MWhr
Greenhouse gas savings per year	377 tonnes CO ² equivalent

Project Bonus: Ilum-a-Lite presents to all clients one tree seedling for every tonne of CO² saved, thus doubling the environmental effect. However Mr Kevin Williams of RPH suggested that since the hospital gardens are being re-furnished could we please provide shrubs. We concurred.

Ilum-a-Lite Pty Ltd
A.B.N. 32 074 580 233

P.O. Box 1246
MONA VALE
N.S.W. 1660
Australia

Ph: 1800 133 666

Mob: 0418 483 301

Fax: 61 2 9980 1640

E-mail
markr@ilumalite.com

Web site
www.ilumalite.com