

Case Study

ILUM-A-LITE SYDNEY OFFICE

CHALLENGE

Illum-a-Lite is a specialist lighting energy saving company headquartered in Sydney and with offices in Brisbane and Melbourne. Due to rapid growth, the company had to relocate to new and larger offices and in February 2011, the company took up tenancy in Norwest Business Park. One of the first priorities was to ensure that the new office represented the best in lighting energy efficiency to save money, greenhouse gas and “walk the talk” of energy efficiency.

SOLUTION

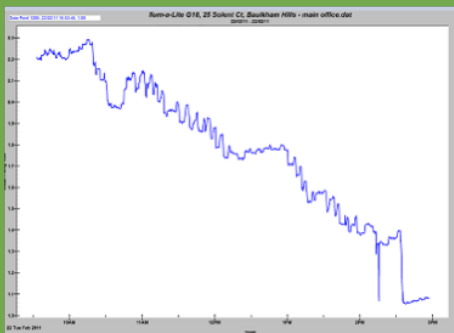
The offices comprised an entry foyer lit by 50 watt halogen downlights and mixed office space with twin 36 watt fluorescent fittings operating on magnetic ballast.

A separate boardroom also had 50 watt halogen downlights. Illum-a-Lite replaced all 50 watt halogen downlights with the Light Eco LED 3.3 watt and upgraded all 36 watt fluorescent lights with Save it Easy T5 adaptors. Fluorescent tubes in one office and the kitchen were fitted with 17 watt LED tubes and Light Eco Zone was installed to control all lights, hot water and air conditioning.

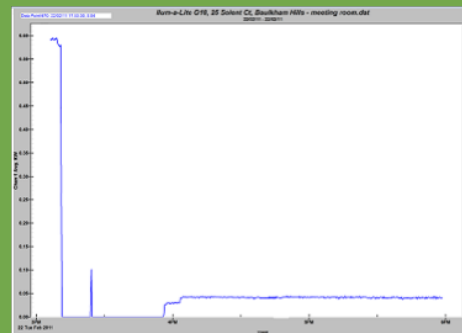
RESULT

The changes implemented by Illum-a-Lite were data logged as they happened. Energy savings of 51% for the main offices and a massive 92% for the boardroom were achieved. Average saving for the tenancy was 60%.

Approximate annual savings	\$915
Approximate investment	\$1,910
Approximate payback	25 months
Greenhouse gas savings per year	1 tonne CO2 equivalent



Main Office data log during installation:



Board Room data log during installation:



TOWARDS A MORE SUSTAINABLE WORLD